

TOTALLY INTEGRATED WATER SOLUTIONS



HISTORY

SMI
ميكانيكية



1971



WATER WORKS DIVISION

WATER WORKS DIVISION

1982

2000

2008

2022



الموسى
AL MOUSA



NWWC was launched in 2008 under a strategic cooperation agreement between SMI and Al-Mousa Group

More than 14 years of continuous evolution and improvements under the accumulative experience from both 40 years of SMI & 51 years of Al-Mousa Group (12 Companies)

NWWC STRIVES TO BECOME THE LEADER IN THE WATER PROJECT SECTOR IN KSA



Al-Mousa Group of Companies



OUR COMPANY

 **NWWC** is a leading EM Saudi company for water and waste water projects operating with international and local manufacturers to provide comprehensive engineering solutions to meet customer requirements both standard or tailor-made plants covering services, partial works and turnkey projects.



OUR SPECIALITY



We provide innovative engineering services and solutions with continuous improvement to maintain competences and commercial competitiveness thus are considered by the water sector stakeholders and operating bodies as a good choice.



We provide high quality products and totally integrated water solutions to meet our clients, contractors and consultants demands and expectations.



WHAT WE DO

Turnover

SAR 1.5 billion in total sales up to date



Supply Chain

SAR 40 Million in stock



Manpower

200 employees
50 engineers



Quality/Accreditation

5 service certification



Tenders

Supply, engineered solutions and O&M



Technical Services

Turnkey, subcontracted and O&M projects



Marketing

seminars, training & exhibitions



MENA Sales

New division



Trading



Technical Services



**WE TAKE
PRIDE IN
SERVING
OUR
CUSTOMERS**

Projects & Contracting



**TOTALLY
INTEGRATED
PUMPING
SOLUTIONS**



Technical Services coverage

Projects (ETP)



Industrial (IND)



Military (MLT)



Commercial Building Services (CBS)



Water Systems (WS)



Technical Services (TS)



Agriculture (AGR)



COMMERCIAL (WHL & RTL)

AFTER SALES FACILITIES

Installation Team



Warehouse



Spare Parts



Continuously
developed

Workshop



Site Services



Test bed facility





1,626,432 m³/day
66 pump

454,008 m³/day
73 pumps

2,213,520 m³/day
350 pumps

233,928 m³/day
218 pumps

146,676 m³/day
58 pumps

Ground Water Supply

Total = 4,500,000 m³/day

* 2000 up to date

In addition to 1,500 pump / year in retail

Power Range:
50 kW to 600 kW



272,640 m³/day

40 pump

750,000 m³/day

350 pumps

432,360 m³/day

21 pumps

238,680 m³/day

30 pumps

883,713 m³/day

154 pumps

Water Transportation

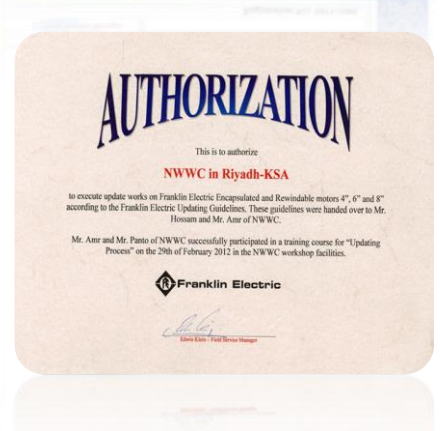
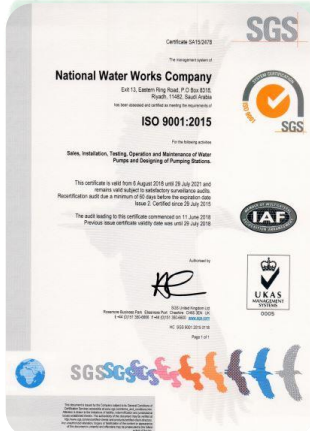
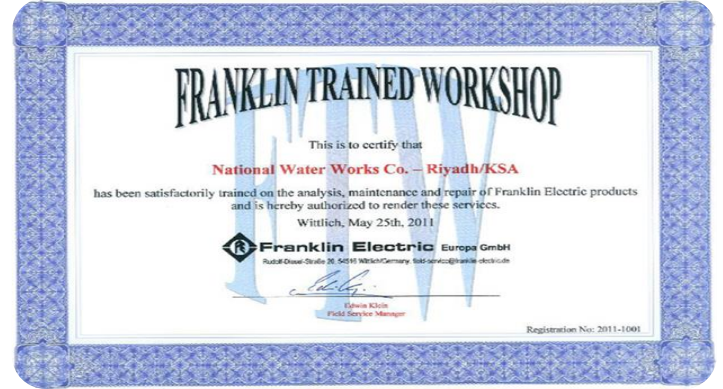
Power Range:
50 kW to 1200 kW

* 2000 up to date

Total = 2,500,000 m³/day



CERTIFICATED





OUR EXPERTISE

- Full range of Borehole Pumps & Motors
- Complete Pumping Stations
- Stormwater and dewatering Packages.
- Mechanical works
- Reverse Osmosis plants.
- Sewage treatment plants
- Engineered water treatment and pumping solutions.
- Firefighting & HVAC
- Domestic water supply
- Technical services.



EXPERTISE & PROJECT'S COVERAGE



OUR PARTNERS



ANDRITZ

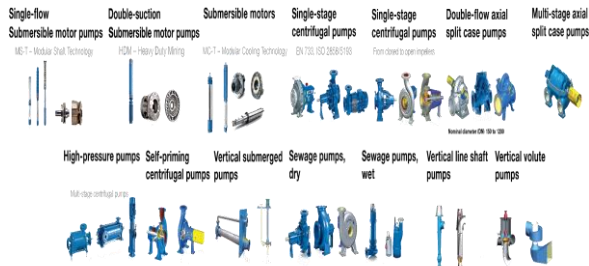


ANDRITZ Over 165 years of experience in hydraulic machine manufacturing and complete process know-how form the basis for our pumps' high performance.

Professional expertise to offer premium pumping technology tailored to our customers' requests and needs

Hugh range of pumps types, flow range, head range.

PRODUCTS



E-Tech



- E-tech pumps are utilized in a wide range of application including residential commercial, fire fighting and industrial installation.
- Submersible pumps produced with flow up to 280 m3/hr and the head up to 600m
- Vertical multi stage pump has a maximum flow up to 65 m3/hr and head up to 300m.

PRODUCTS



Franklin Electric



- Franklin Electric produce a wide range to meet various applications requirements. Encapsulated and rewind able types up to 500hp and 12" size with different rating voltage, using different high quality materials.

PRODUCTS



APPLY



HITACHI

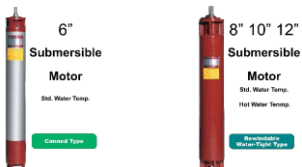
Inspire the Next



By  **SUN-STAR
ELECTRIC, INC.**

- Hitachi was the first to manufacture electric motors in Japan on 1914. It's the pioneer of submersible motors market
- Hitachi manufactures a complete range of submersible pump motors, 6" up to 14" size for a standard and high temperature application up to 75°C with standard and stainless steel construction.

PRODUCTS

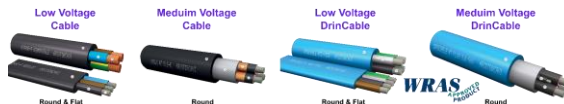


ARISTONCAVI



- Aristoncavi is one of the most important independent manufacturers of rubber cable, in different formation for wide range of applications.
- Insulated low-voltage, medium-voltage and special cables which are classified to fire and high temperature resistance, heavy duty condition resistance cables and cables resisting liquids and DRINCABLE in some of the cable types that Aristoncavi produced.

PRODUCTS



- Erhard is one of the most important manufacturers of water valves in the world with experience dating back 140 years.
- Erhard supplies valves for all sectors of the water supply industry in all size ranges, from domestic service lines valves to valves for power plants with nominal widths from DN 40 to DN3000.

PRODUCTS

Gate Valves

Butterfly Valves



APPLY

SEEPEX. ALL THINGS FLOW



- SEEPEX is a leading worldwide specialist in pump technology.
- Their progressive cavity pumps, macerators and control systems are used wherever low to highly viscous, aggressive or abrasive media must be conveyed at low pulsation rates.
- Customers choose them because they offer excellent, reliable and cost-efficient solutions.
- Their product line consists of the latest and smartest technology; Smart Air Injection, Smart Conveying Technology, Mine Dewatering Unit, Metering Pump, Food Pumps, and Control Systems.
- SCT Smart conveying technology

PRODUCTS



- For more than 80 years, Gorman-Rupp has manufactured the high performance, high quality pumps and pumping systems required for lasting service in the municipal, water, wastewater, sewage, industrial, construction, petroleum, fire and OEM markets.

PRODUCTS

Self-Priming Pumps



Self-Priming engine driven



- GE manufactured motors for some of the first commercial and industrial electrical applications..
- GE designed rotating machines that comply with all global standards such as ABS, API, ATEX, CSA, DNV, ExN, ExP, GOST, IEC, IEEE, Lloyds, and NEMA

PRODUCTS

Vertical Motors

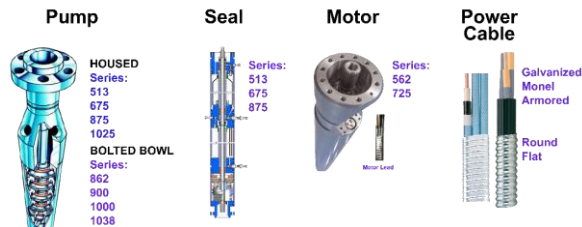


- Baker Hughes was formed in 1987
- Extreme Temperature™ (ET) ESP system
- High performance slim equipment (10" max).
- Pumps up to 4500GP
- High efficiency motors.



- Since 1990, GP provides In-House Design and Manufacturing (In house casting facility). With more than 2000 models of pumps sold in more than 20 countries worldwide, GP is renowned for supplying various types of pumps. From UL-listed fire-fighting sets, Split-Case, End-suction pumps, to domestic booster pumps. GP assures that each and every pump is computerized performance tested according to ISO 9906 / ANSI/HI/14.6 standard.

PRODUCTS



PRODUCTS



centrifugal-end-suction-fire-pumps-ul-fm



Horizontal-split-case-pumps-ul-fm



Centrifugal-end-suction-pump



- manufacture commercial-quality axial and mixed flow pumps for any job of any size.
- Heavy-duty high-volume water pumps are made with patented MWI developed technology, and they are internationally recognized for their longevity, efficiency, and performance.
- MWI large volume pumps are currently in use in over fifty countries around the world.

PRODUCTS

Flood control pumps



- Diesel or electric
- Mobile
- High Flowrate
- Up to 60" of diameter

Submersible mixed & axial flow pumps



- EBARA Corporation is recognized as a world leader in the design, development and manufacture of pumps. And in the domestic market,
- EBARA has proven its dominance in providing cutting-edge technology and robust designs for their centrifugal pumps. From pressure boosting to irrigation applications,
- EBARA pumps have proved to be a trusted partner for our clients.

PRODUCTS

2GP 2CDX



CD



2GP AGA



CDX(L)



3GP(E) CVM



CMA - B - C - D



DS-DSF



DWC



APPLY

Supply & installation



PUMP STATIONAPPLICATIONS



VALVING APPLICATIONS



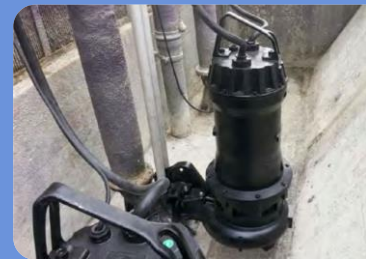
DEEP WELLS & VTP APPLICATIONS



DEEP WELLS & VTP PROJECTS



STORM WATER APPLICATIONS



SEWAGE LIFT STATIONS
APPLICATIONS



WATER TREATMENT
APPLICATIONS



Saad Project Lot 6 / Providing Riyadh City with Water (Electrical Systems)

Project Type : MV SWITCHGEAR + OHL
Year : 2020-2022
Location : Riyadh
Client : NWC
Code : CON190005

NWWC scope of work is to:
MV Building with All Facilities

Installation MV Switchgear 33kV

MV Cabling

OHL 33kV Single Circuit 52km

OHL 33kV Double Circuit 41km



MV SWITCHGEAR + OHL

Supply & installation

Tufaih Wells Filed Project - Eastern Province

| | |
|--------------|-------------------------------|
| Project Type | : Wells Field |
| Year | : 2020 - 2022 |
| Location | : Dammam - Jubail - Tufaih |
| Capacity | : 110,000 m ³ /day |
| Client | : MEWA / NWC |
| CODE | : CON190004 |

NWWC scope of work is to:

Supply , Installation, testing & commissioning of water system at Al-Tufaih project Eastern Province to provide 110,000 m³ / day (Part 1).

- Flow of 20 X 270m³/h @ 70-80-93m head.
- 10KM Overhead line 13.8kV with all related accessories.
- 10KM roads inside project area.
- Related civil works.





Supply and installation of pumps with accessories for TGC PUMPING STATION IN RIYADH

| | |
|---------------------|-------------------------------|
| Project Type | : Pumping station |
| Year | : 2013 - 2016 |
| Location | : Riyadh |
| Capacity | : 100,000 m ³ /day |
| Client | : NWC |
| CODE | : E1303046 |

NWWC scope of work is to:

Supply , Installation & testing & commissioning.

- Flow of 2 x 2220m³/hr @ 50m head.
- Dual Speed Motor 1190/890 rpm 410 kW/185 kW, 4160V, 50°C,
- 1000mm dia. pipes, valves and fitting.
- Related civil works



PUMP STATION PROJECTS

Supply & installation



Design, supply and installation of pumping & motors for pumping station in JEDDAH Al-Faisaliah

| | |
|---------------------|-------------------|
| Project Type | : Pumping station |
| Year | : 2014-2016 |
| Location | : Jeddah |
| Capacity | : 165,000 m3/day |
| Client | : NWC |
| CODE | : E1404099 |

NWWC scope of work is to:

Supply , Installation & testing & commissioning.

- Flow of 3 x 2300 m³/hr @ 59m head.
- Menzel MV Motor 1185 rpm 600 kW, 4160V, 50°C,
- SS Piping works.



Supply & installation

PUMP STATION PROJECTS

BURAIDAH PUMP STATION PROJECT

| | |
|---------------------|------------------------------|
| Project Type | : Pumping station |
| Year | : 2007 |
| Location | : Buraidah Al-Qaseem |
| Capacity | : 50,000 m ³ /day |
| Client | : MEWA |

NWWC scope of work is to:

Supply , Installation & testing & commissioning.

- Flow of 8 x 650 m³/hr @ 60m head.
- 160 kW, 380V, 50°C, SS316L
- SS316L piping & interconnecting works.



Supply & installation

PUMP STATION PROJECTS

AL BAHA PUMP STATION PROJECT

| | |
|---------------------|-------------------|
| Project Type | : Pumping station |
| Year | : 2010 |
| Location | : AL BAHA |
| Capacity | : 50,000 m3/day |
| Client | : MEWA |

NWWC scope of work is to:

Supply , Installation & testing & commissioning.

- 8 Ritz end suction pumps 650m3/hr @ 60m head.
- 160 kW, 380V, 50°C, SS316L
- SS316L pipes, valves and fitting.

PUMP STATION PROJECTS

SUPPLY

RIYADH STRAETGIC TANK PROJECT

Project : Strategic Tank Project
Year : 2014
Location : Riyadh - SALBOUKH
Client : NWC
Code : E1306114

NWWC scope of work is to:

DN2000 PN16 Control Valve
The biggest control valve in the kingdom
In addition to a wide range of Control, Needle and
Butterfly Valves to complete project's operation.



SUPPLY

VALVING PROJECTS

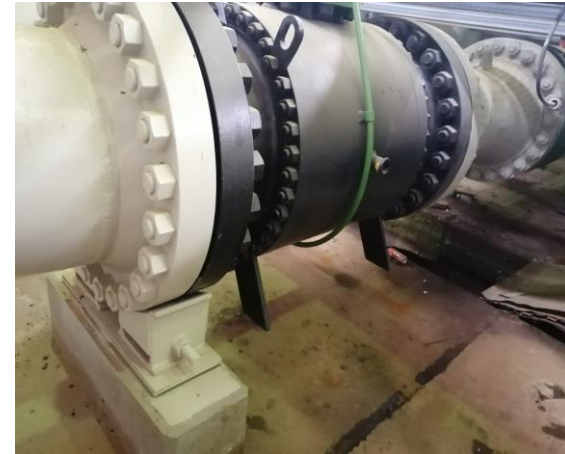
Rehabilitation of main pump's check valves for Shuqaiq water transmission systems phase 1

Project Type : Rehab works at Shuqaia plant Project.
Year : 2017 -2020
Location : Shaqiq – jazan
Client : SWCC
Code : IND170133

NWWC scope of work is to:

Supply , Installation & testing & commissioning of required works to enable plant operation inclusive of

- 16 NON SLAM NOZZLE CHECK VALVE DN 24' ANSI 600
- 4 NON SLAM NOZZLE CHECK VALVE DN 24" ANSI 300



SUPPLY

REHAB. WORKS

CONTROL VALVES FOR SWCC JUBAIL HAFR AL-BATIN WTS

Project : Replacement Valves
Year : 2013
Location : SWWC Eastern Water Transmission Line
Client : SWCC

NWWC scope of work is to:

Supply of:

- § ERHARD Control / Needle Valves,
- § DN700 & DN400 – PN100



VALVING PROJECTS

SUPPLY

BRIMAN TANKS , MEKKAH, HARMAIN PROJECT

Project : BRIMAN TANKS , MEKKAH, HARMAIN PROJECT

Year : 2016

Location : Jeddah, Makkah

Client : NWC

NWWC scope of work is to:

Supply of:

- 740 ERHARD Control / Needle valves, Butterfly valve, Air Release Valve, Gate Valves



VALVING PROJECTS

SUPPLY

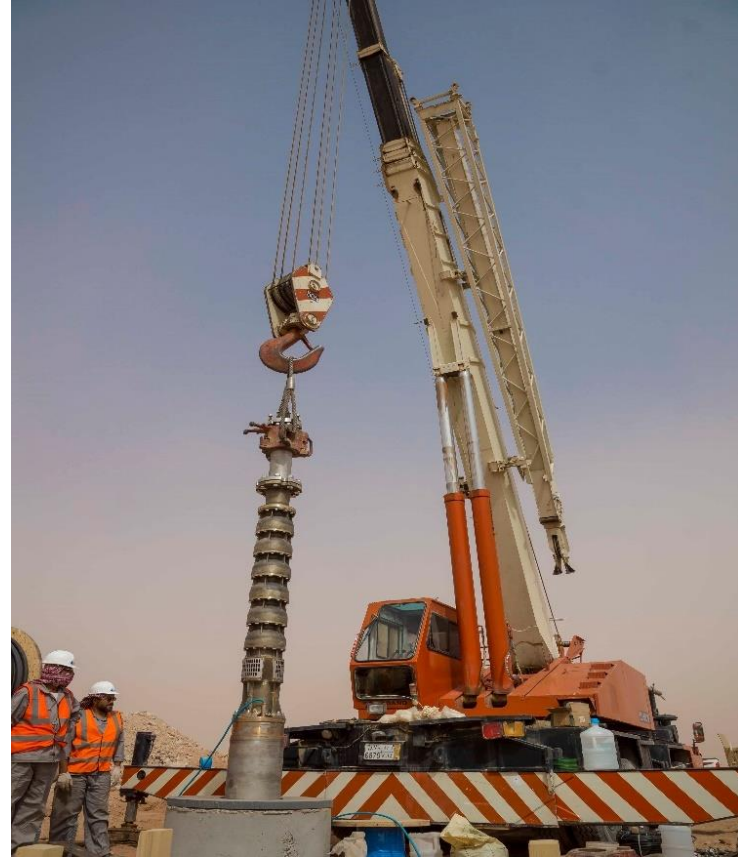


Saad Project Lot 2 / Providing Riyadh City with Water (Submersible Pumping Systems)

Project : SAAD LOT 2 Project
Year : 2015
Location : Saad Village on Dammam Road
Client : NWC
CODE : E1102028

NWWC scope of work is to:

400,000 m³ / day raw water to provide
300,000 m³ / day drinking water
Supply and installation of Wide range of
ANDRITZ Submersible borehole Pumps
with MST (Modular Shaft Technology)
& ANDRITZ Ritz Submersible motors
(390 KW / 4160V/60 Hz)
includes complete civil & mechanical works



Supply & installation

DEEP WELLS & VTP PROJECTS

RIYADH WATER SUPPLY ENHANCEMENT PROJECT

Project : 43 Project

Year : 2012

Location : Riyadh

Client : NWC

Client : E1206103

NWWC scope of work is to:

200,000 m3 / day raw water

supply, install, testing and commissioning of:

- **43** Centrilift deep well pumping equipment's and related accessories.



DEEP WELLS & VTP PROJECTS

Supply & installation

Supply and installation of well water pumps in Hazem Al Jalamid area

Project : Supply and installation of well water pumps in
Hazem Al Jalamid area

Year : 2014

Location : Hazem Al Jalamid

Client : Maaden Phosphate company

NWWC scope of work is to:

Supply, installation and operation

- 6 submersible pumps (Centrilift) (complete set)
- one unit Spare Centrilift Submersible Pump
- 6 Switch Gear





PRINCESS NOURA UNIVERSITY PROJECT

Project : Deep Well Pumps
Year : 2013
Location : Riyadh
Client : Princess Noura University Riyadh
Year : E1012228

NWWC scope of work is to:

Supply, installation, testing and commissioning of:

- 2 units of Center lift submersible pump, Ni-Al Bronze construction, 1000 GPM @ 1760ft.
- submersible motors 700HP, 4160V,
- Operation Through 24 Puls VFD.



Supply & installation

DEEP WELLS & VTP PROJECTS

TABUK AL-SHAMIL PROJECT

Project : Tabuk Al-Shamil Project
Year : 2011
Location : Tabuk
Client : Tabuk Water Directorate
Code : E29031

NWWC scope of work is to:

Supply, installation, testing and commissioning of:

- 29 Complete ANDRITZ RITZ submersible bore pump and motor.
- Flow : 65 l/s.
- Head : 115 m to 165 .



Supply & installation

DEEP WELLS & VTP PROJECTS

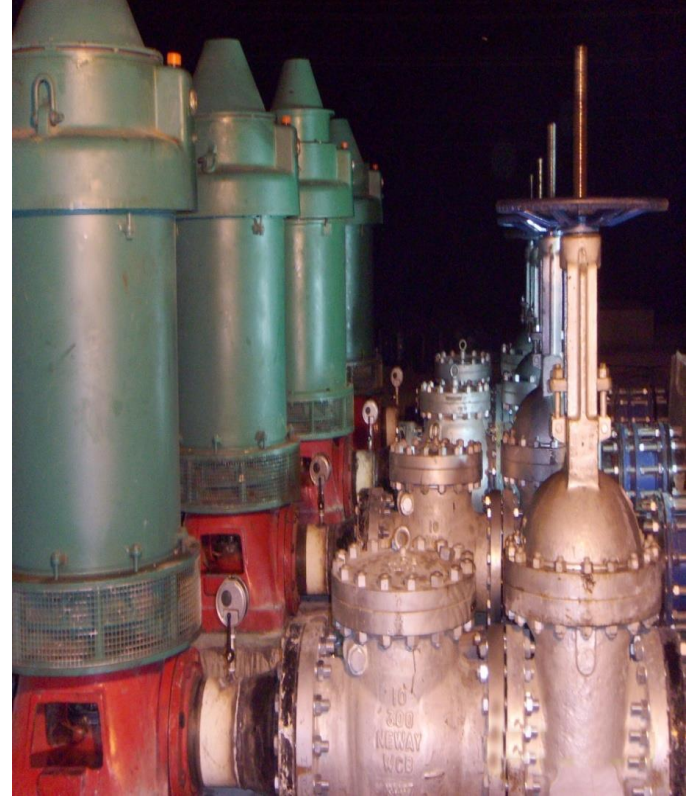
WADI ITWED PROJECT

| | |
|---------------------|---|
| Project Type | : Itwed Water Project/ Water treatment plant. |
| Year | : 2007 |
| Location | : Wadi Itwed – Abha. |
| Capacity | : 30,000 m ³ /day. |
| Client | : Aseer Water Directorate |

NWWC scope of work is to:

Supply, installation, testing and commissioning :

- ✓ Primary flow of 180m³/hr @ 40m each.
- ✓ Temporary solution flow of 270m³/hr@ 175m.
- ✓ Main flow of 540 m³/hr.
- ✓ Electrical works.
- ✓ Piping and fittings.



Supply & installation

DEEP WELLS & VTP PROJECTS

MOBILE SELF PRIMING PUMPS PROJECT

Project : Supplying mobile drainage pumps
Year : 2019
Location : Riyadh
Client : NWC
Code : ETP180158

NWWC scope of work is to:

Supply of:

- 4 no. of 8" self priming pump
- 4 no. of 10" self priming pump
- 2 no. of 12" self priming pump



STORMWATER PROJECTS

SUPPLY



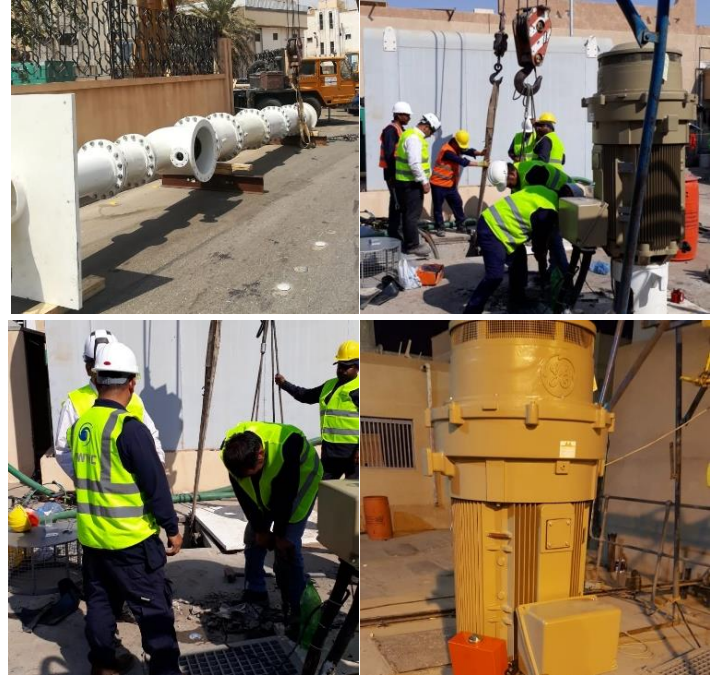
QASSIM STORM WATER TRANSFER PROJECT Project Rabesha & Ajeba

Project : Storm Water Transfer Pump
Year : 2019
Location : Qassim
Client : Al-Qassim Municipality
Code : ETP170017

NWWC scope of work is to:

Design, supply, installation, testing and commissioning of:

- 4 Storm water pumps for 2 Stations
- Flow: total 40,400 gpm
- Head: 77ft4 **HUGE VTP**



Supply & installation

STORMWATER PROJECTS

QASSIM STORM WATER TRANSFER PROJECT

| | |
|-----------------|---------------------------|
| Project | : Mobile Storm Water Pump |
| Year | : 2018 |
| Location | : Qassim |
| Client | : Al-Qassim Municipality |

NWWC scope of work is to:

Supply, testing and commissioning of:

- ✓ 1 Mobile Storm water pumps
- ✓ Flow: total 10,500 gpm
- ✓ Head: 12ft



Hydroflo

STORMWATER PROJECTS

SUPPLY

AL-MIKHWA LIFTING STATIONS PROJECT

Project : Al-Mikhwa Lifting Stations
Year : 2014
Location : Al-Baha – Al-Mikhwa
Client : Al-Baha Water Directorate
Code : E1312292

3 lift stations with VFD

NWWC scope of work is to:

Design, supply, installation, testing and commissioning of:

- 7 Sewage submersible pumps for 3 Lifting Station
- Flow: up to 2500 USGPM
- Head: 78M Head



SEWAGE LIFT STATIONS PROJECTS

Supply & installation

ALBAHA LIFTING STATION PROJECT

| | |
|-----------------|-----------------------------|
| Project | : Al-Baha Lifting Station |
| Year | : 2013 |
| Location | : Al-Baha |
| Client | : Al-Baha Water Directorate |
| Code | : E1212169 |

54 lift stations

NWWC scope of work is to:

Design, supply, installation, testing and commissioning of:

- Sewage submersible pumps for 54 Lifting Station
- Flow: 200 USGPM up to 2500 USGPM
- Head: 8 M up to 78M Head



Supply & installation

SEWAGE LIFT STATIONS PROJECTS

Implementation of raising the capacity of AL-KHOMRA plant 3 & 4 – Jeddah

| | |
|---------------------|---|
| Project Type | : WATER TREATMENT APPLICATIONS |
| Year | : 2020 |
| Location | : JEDDAH |
| Capacity | : 250,000 -300,000 m3/day (AL KHOMRA PLANT 4) :140,000 -190,000 m3/day (AL KHOMRA PLANT 3) |
| Client | : NWC |
| Client | : CON190003 |

NWWC scope of work is to:

Supply , Installation

- Excess sludge Handling inclusive of electrical & relevant SCADA works
- 6 Decanter + washing & polymer pumps with necessary electrical works.
- Construction of a metal hangar with an area of 36 m × 24 m × 7 m



AL MADINA RO PROJECT

Project Type : Borehole pumps for water treatment plants containerized RO system

Year : 2011

Location : Al Madina Al Munawara.

Capacity : 300 m³/day.
600 m³/day.

Client : Al-Madina Water Directorate

Year : E108158

NWWC scope of work is to:

Supply, installation, testing and commissioning of:

- ✓ Containerized treatment units for borehole water
- ✓ E-Tech Submersible Pumps C/W Franklin sib. Motor.
- ✓ Flow : 10 to 15 L/S @ Head : 220 meter



REHABILITATION OF SEWAGE TREATMENT PLANT

| | |
|---------------------|---------------------------|
| Project Type | : Sewage Treatment |
| Year | : 2018 |
| Location | : Khamis Mushit |
| Capacity | : 400, m3/day |
| Client | : MOD /Air Defence |

NWWC scope of work is to:

Rehabilitation of old plant by adding the necessary equipment to run by automatic Mode perfectly

- Comminutor
- Flow meters , control panned , PLC
- Valves
- Media



REHABILITATION OF RO PLANT

| | |
|---------------------|------------------------|
| Project Type | : RO Plant |
| Year | : 2019 |
| Location | : Power Plant – Rafha. |
| Capacity | : 100, m3/day. |
| Client | : SEC |
| Code | : WS180009 |

NWWC scope of work is to:

Rehabilitation of RO plant as Following Replacing filter media
Automatic Valves ,Flow meters ,

Programing for PLC & Scada system



SUPPLY

REHABILITATION OF RO PLANT

| | |
|---------------------|--------------------------|
| Project Type | : RO Plant |
| Year | : 2015 |
| Location | : Power Plant – Qurayat. |
| Capacity | : 100, m3/day. |
| Client | : SEC |
| Code | : E1109126 |

NWWC scope of work is to:

Rehabilitation of RO plant as Following Replacing filter media Automatic Valves ,Flow meters ,
Programing for PLC & Scada system



Operation & Maintenance



Project maintenance networks wells in Tabuk

| | |
|--------------|---------------------------|
| Project Type | : Operation & Maintenance |
| Location | : Tabuk |
| Year | : 2018-2020 |
| Client | : Tabuk Municipality |
| Code | : ETP180138 |

NWWC scope of work is to: Maintenance of irrigation networks and well stations in Tabuk region

Supply of:

- National Pump & GE Motor



Operation and maintenance of wells, water stations and water networks Project in Khashm Al-An

Project Type : Operation & Maintenance

Location : Khashm al-an ,Riyadh

Year : 2019-2022

Client : Ministry of National Guard

Year : **OPM180022**

NWWC scope of work is to: Maintenance and operation of wells desalination plants water networks in the Khashm Al-An area for 3 years

Supply of:

✓ Andritz & Baker Huhges



Installation of Centrilift Pump unit Project in Derab

| | |
|---------------------|-------------------------------|
| Project Type | : Operation & Maintenance |
| Location | : King Abdul Aziz City, Derab |
| Year | : 2017 |
| Client | : Ministry of National Guard |
| Code | : OPM170027 |

NWWC scope of work is to: Maintenance and operation of residential city pumps in Dirab

Supply of:

- ✓ Install of Centrilift Submersible Pump unit.
- ✓ Testing & commissioning



Renting Of Deep Wells Submersible Pump

Project Type : Operation & Maintenance

Location : Sedair

Year : 2018 - 2019

Client : TAWZEE

NWWC scope of work is to:

Supply of:

Supply of E-Tech & Rovatti Pump SLB ESP units for water deep wells.



Maintenance Of Deep Wells Submersible Pump

Project Type : Maintenance
Location : Turif, Waad Al Shamal
Year : 2021
Client : Maaden Phophotes

NWWC scope of work is to:

Well Inspection , Pumps & Accessories

Removal , Repair and Re-installation Works





Corporate Activities & Knowledge Transfer





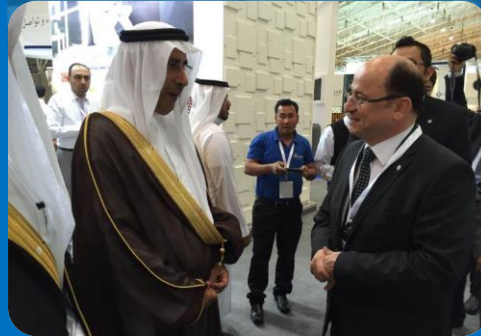
TRAINING



SEMINARS



EXHIBITIONS& EVENTS



GOVERNMENT & SEMI GOVERNMENT SECTORS CLIENTS



وزارة البيئة والمياه والزراعة
Ministry of Environment Water & Agriculture
Kingdom of Saudi Arabia المملكة العربية السعودية



المؤسسة العامة لتحلية المياه المالحة
Saline Water Conversion Corporation





Nesma
& Partners



mapa
inşaat ve ticaret a.ş.



Limak

شركة الراشد للتجارة والمقاولات
AL-RASHID TRADING & CONTRACTING CO.



اسمنت اليمامة
Yamama Cement

الصحراء
للستروكيماويات
sahara petrochemicals

FEMCO فيمكو



أزميل
AZMEEL
مقاولات
Contracting



YOUR WATER STRATEGIC PARTNER



@NWWCKSA



NWWC (E-SALES)

THANK YOU